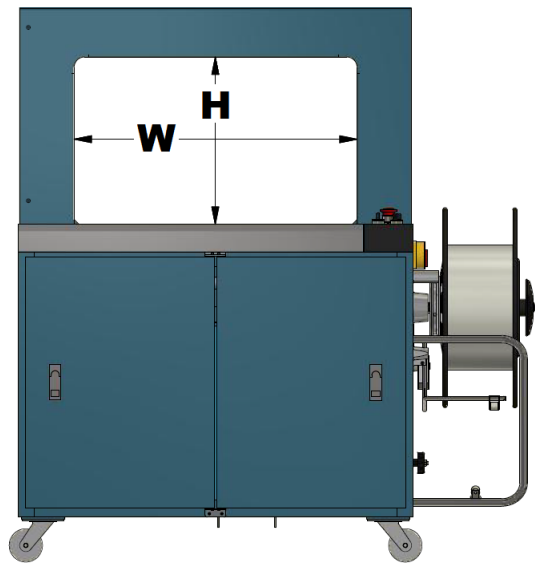


Arch Sizes (mm)

W \ H	550	650	850	1050	1250	1450	1650
400	S						
500		*	*	*	*	*	*
600			*	*	*	*	*
800			*	*	*	*	*
1000			*	*	*	*	*

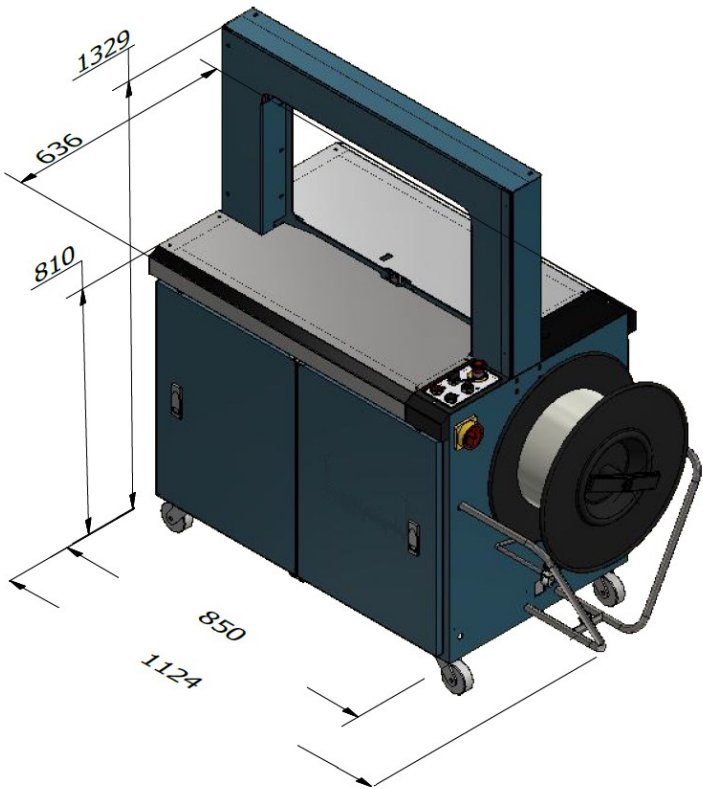
S Standard * By request



Specification (PW-DU0540)

Power Supply	1Ø : 110V / 220V / 230V / 240V, 50/60Hz
Strapping Head	DUAT
PP band width	5,6, or (8,9) (mm)
Welding Method	Heat Sealing
Tension Range	Up to 30 (kg)
Working Height	810 (mm)
Max load weight	40 (kg)
Package Size Range (mm)	Min. W 100 X H 30 Max. W 450 X H 300

Standard Dimension (mm)



Options

- Stainless Steel Frame (SUS 304)
- Higher tension range for 8, 9 mm strap widths (up to 43kg)
- Other choice of table-top styles: free roller or ball tabletop

56, 35th Rd. Taichung Ind. Park,
Taichung 407, TAIWAN
E-mail : packway07@packway.com
TEL : +886 4 2359 1858
FAX : +886 4 2359 7489
WEB: www.packway.com



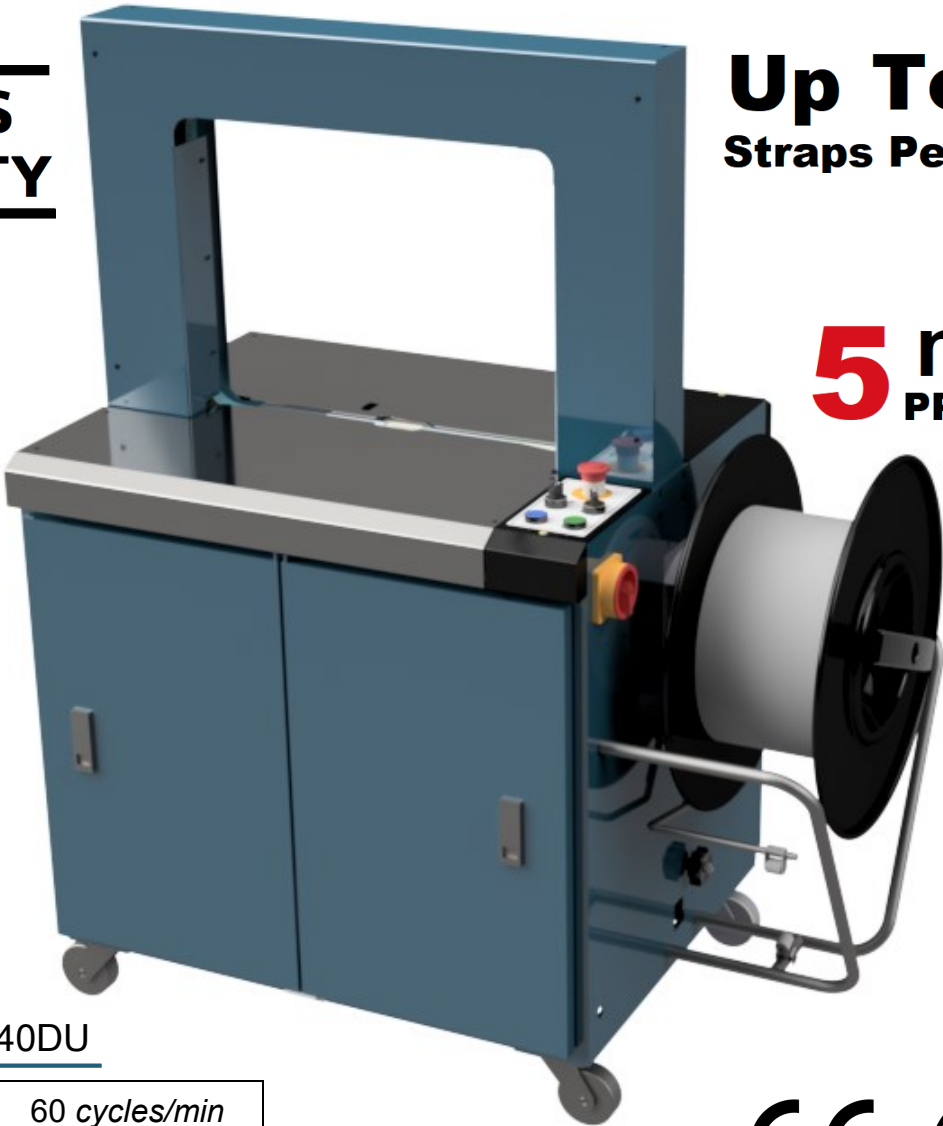
AUTOMATIC STRAPPING MACHINE

PW-DU Series is the new range of economical model of high-speed automatic strapping machine, with speed up to 60 cycles per minute, it is suitable for light weight packaging needs such as Mail room distribution, Newspaper Industry, Textile and Clothing or Cosmetics, you will find its wild range of applications available. The MOST economical 5mm strap-ping machine in the market.

2 YEARS WARRANTY

Up To 60 Straps Per Minute

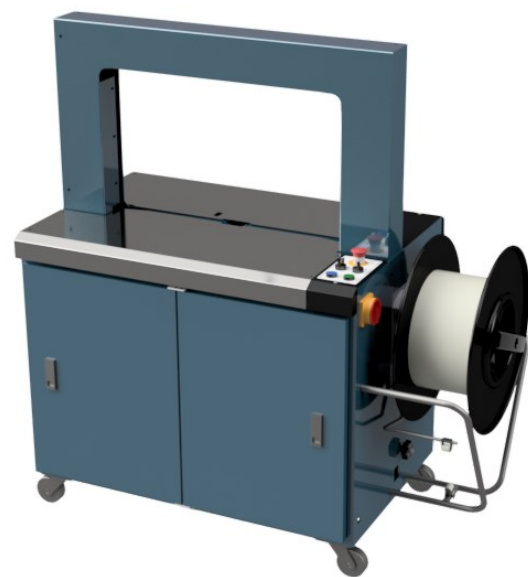
5 mm PP Strap



PW-0540DU

Strapping Speed	60 cycles/min
Arch Size (mm)	W 550 x H 400





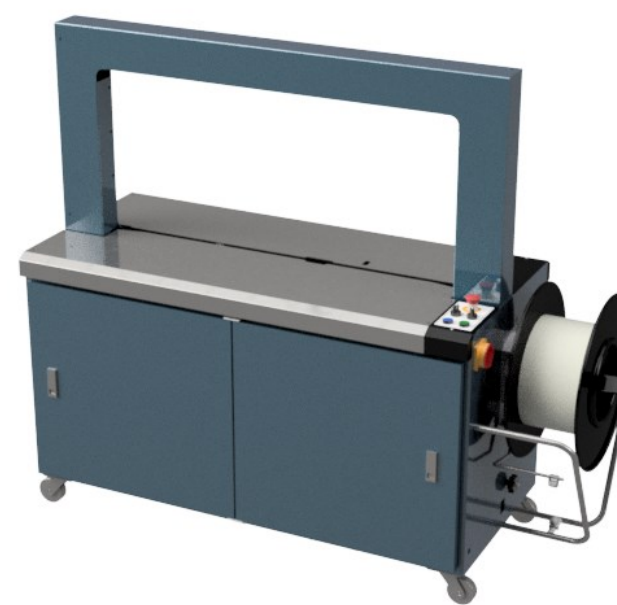
PW-0650DU

Strapping Speed	55 cycles/min
Arch Size (mm)	W 650 x H 500



PW-0850DU

Strapping Speed	50 cycles/min
Arch Size (mm)	W 850 x H 500



PW-1850DU

Strapping Speed	45 cycles/min
Arch Size (mm)	W 1050 x H 500



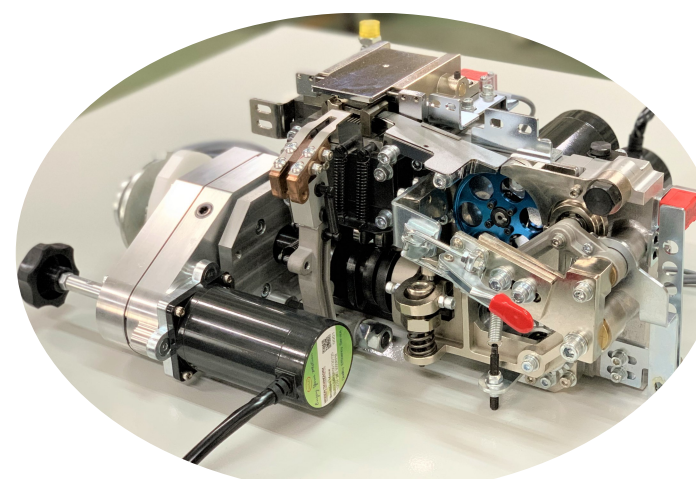
PW-2850DU

Strapping Speed	40 cycles/min
Arch Size (mm)	W 1250 x H 500

Main Features

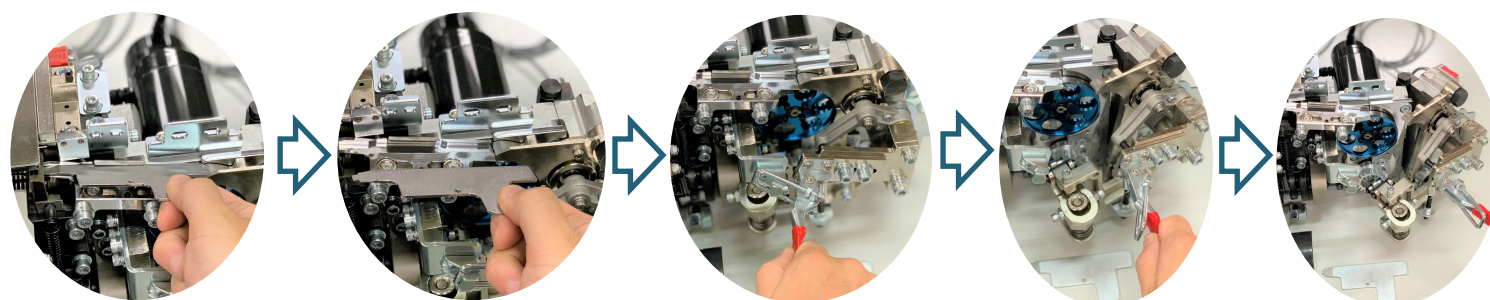
High Efficiency

The strapping head is equipped with DC brushless motors for superb strapping speed up to 60 straps/min.



Easy Access Strap Path

Unique tool-free access to strap path for easy trouble-shooting, and maintenance. Just 3 seconds to access.



Control Features

End of Strap Coil

When strap coil is empty, strapping head continues to utilize the straps in the dispenser until it is empty. Only when the last bit of strap is less than the total arch's length, then strap chute opens automatically for the operator to proceed removing the last bit of strap.

Strap Tension

Easy to adjust to various strapping tension by turning the knob on the panel.

Flexible Operation

Operating with manual push button or foot pedal for strapping and table top switch as optional.

Strap Loop Eject

Any miss-strapping, the strap loop will be ejected out of the strap head to avoid strap jammed inside.

Strap - Refeed

Strap in position detection in case for any short-feed, the machine will automatically re-feed twice.